

TOTAL SPACE 88 m²
CEILING HEIGHT 3.6 m

KEY FEATURES

LAYOUT Divided into three areas

- **PRIMARY AREA** Designed for shooting, casting, interviews, styling, or client workspace, complete with a private bathroom
- **LOUNGE AREA** Furnished with leather couches, a coffee table, and a premium sound system
- **KITCHEN AREA** Fully equipped kitchnette

WINDOWS Knee-to-ceiling 2.4m (h) windows with northern exposure

FLOORING Black concrete

EXPANDABLE Connected to the Lounge on the 2nd floor. Combinable with Studio 1 & Studio 2

CURTAIN SYSTEMS Available to darken as needed

PARKING Direct parking for two cars at the entrance

STUDIO ACCESS

LOCATION 3rd Floor (2.OG)

STAIRCASE WIDTH 1.7m(w)

STUDIO ENTRANCE 1.8m (W) x 2.8m (H)

TRUCK ACCESS Maximum height of 3.8 m

EQUIPMENT TRANSPORT

Equipment & luggage can be rolled curbside to the staircase, then transported into the studio via a cargo lifter.

CARGO LIFTER SIZE 1.6m (H) x 1.13m (W) x 0.9m (D)

PAYLOAD CAPACITY 250 kg



← Scan here to watch cargo lift in action

TECHNICAL SPECIFICATIONS

POWER OUTLETS 25x 230V outlets

INTERNET ACCESS 5 GHz Wi-Fi fiber optic network

AUDIO CAPABILITIES

- Spotify and Wi-Fi streamer
- 2 satellite speakers
- Vinyl player

EQUIPMENT RENTAL & PAINTING SERVICES

EQUIPMENT RENTAL Extensive range of photography, lighting, and grip equipment available in house at competitive pricing.

AMENITIES included in your booking, no additional cost

MAKEUP AND DRESSING AREAS

- Fixated makeup with a height-adjustable leather chair, mirror
- 2 clothing racks with standard hangers + pants hangers
- 1 Jiffy steamers (incl. distilled water)
- 1 steam iron and ironing board

KITCHEN FACILITIES

- Full Kitchnette with mini-refrigerator, dishwasher
- Cutlery and plates

CATERING SERVICES & REFRESHMENTS

LUNCH

- Available through our catering partner
- Approx. 25 € per person, minimum order of 10 people
- Options: vegan, vegetarian, and meat

BREAKFAST

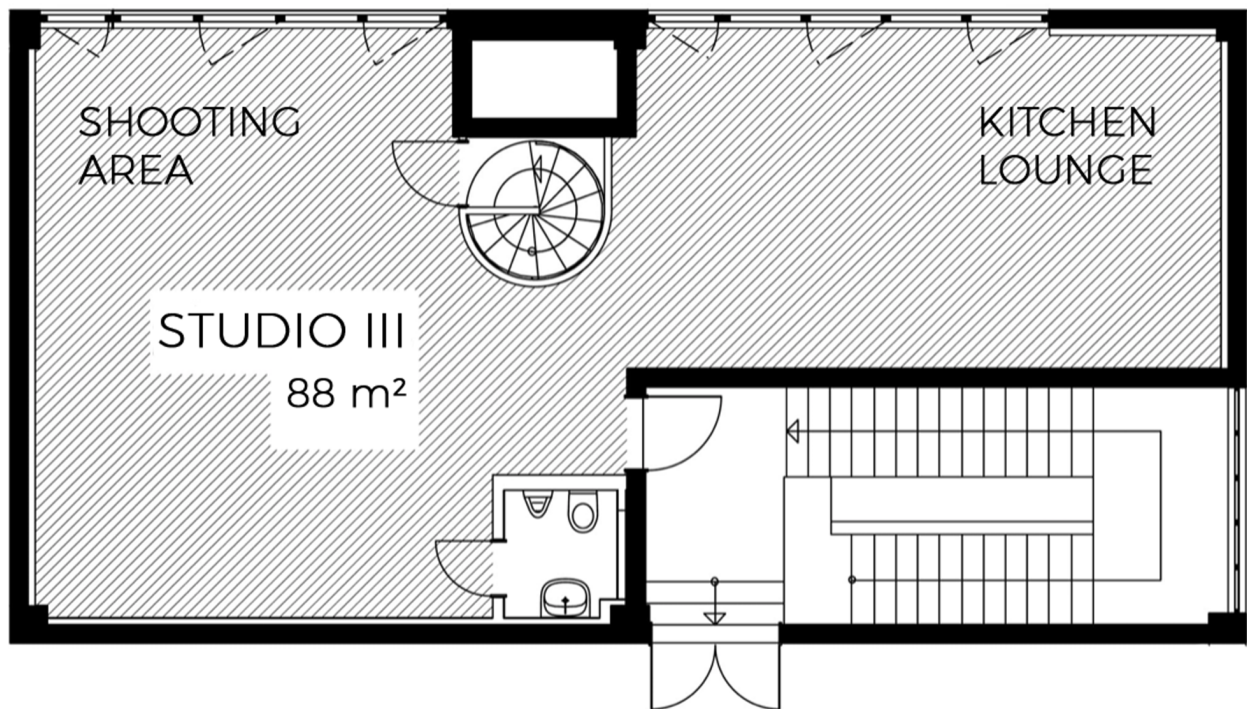
- Freshly prepared and available with 2-day notice
- Approx. 16-18 € per person (pricing varies by group size)
- Fixed menu with vegetarian and/or meat options

HOT BEVERAGES

- Complimentary coffee and tea for up to 10 people

COLD BEVERAGES

- A selection of 18 soft drinks, 5 types of beer, 2 wine varieties
- Charged by consumption



ON-SITE PARKING

2 CAR PARKING SPOTS are available in front of the studio entrance for crew and equipment loading/unloading.
ADDITIONAL PARKING can be arranged upon request.
FREE PUBLIC STREET PARKING and at Hornbach lot is also available (see map)

