

TOTAL SPACE 280 m² plus 55 m² H&M / Styling
CEILING HEIGHT 4.1 m

KEY FEATURES

DAYLIGHT CYCLORAMA SPACE 80m²

CYCLORAMA DIMENSIONS 7.3m (w) x 9.8m (l) x 4.1m (h)

EXPANDABLE Combinable with Studio 2 for a total of 479 m²

FLOORING Black concrete

WINDOWS Waist-to-ceiling 2.4m (h) windows with SW exposure along the left and back sides of the cyclorama

CURTAIN SYSTEMS Available to darken as needed

CENTRAL A/C Climate control for comfort

PARKING 2 cars can be parked directly at the entrance

STUDIO ACCESS

LOCATION 2nd Floor (l.OG)

STAIRCASE WIDTH 1.7m(w)

STUDIO ENTRANCE 1.8m (W) x 2.8m (H)

TRUCK ACCESS Maximum height of 3.8 m

EQUIPMENT TRANSPORT

Equipment & luggage can be rolled curbside to the staircase, then transported into the studio via a cargo lifter.

CARGO LIFTER SIZE 1.6m (H) x 1.13m (W) x 0.9m (D)

PAYLOAD CAPACITY 250 kg



← Scan here to watch cargo lift in action

TECHNICAL SPECIFICATIONS

POWER OUTLETS 1x 16A, 2x 32A, and 24x 230V outlets

INTERNET ACCESS 5 GHz Wi-Fi fiber optic network

AUDIO CAPABILITIES

- Spotify and Wi-Fi streamer
- 4 satellite speakers and 2 subwoofers
- Zone mixer with crossover

PRODUCTION UTILITIES

- 5 types of ladders
- Compressed air
- Basic tools (e.g., screwdrivers)
- Extra tables available
- Polyboards and stands
- 3 movable walls for set design (upon request)

EQUIPMENT RENTAL & PAINTING SERVICES

EQUIPMENT RENTAL Extensive range of photography, lighting, and grip equipment available in house at competitive pricing.

CUSTOM PAINTING Available upon request for the cyclorama and movable walls in white, green screen, or a custom color.

AMENITIES included in your booking, no additional cost

MAKEUP AND DRESSING AREAS

- Private Production Room for talent preparation
- Movable makeup table with a height-adjustable leather chair
- Hair washing station
- 6 clothing racks with 100 standard hangers + 50 pants hangers
- 2 Jiffy steamers (incl. distilled water)
- 1 steam iron and ironing board
- 1 Full-length mirror
- 1 Love sofa

KITCHEN FACILITIES

- Professional Italian espresso machine
- Side-by-side refrigerator with icemaker
- Full kitchen with dishwasher, induction stove & oven
- Cutlery and plates for up to 50 people

CLIENT LOUNGE AREAS

- Dining table for up to 10 people
- Leather couches and coffee table
- Additional chairs and benches available upon request

CATERING SERVICES & REFRESHMENTS

LUNCH

- Available through our catering partner
- Approx. 25 € per person, minimum order of 10 people
- Options: vegan, vegetarian, and meat

BREAKFAST

- Freshly prepared and available with 2-day notice
- Approx. 16-18 € per person (pricing varies by group size)
- Fixed menu with vegetarian and/or meat options

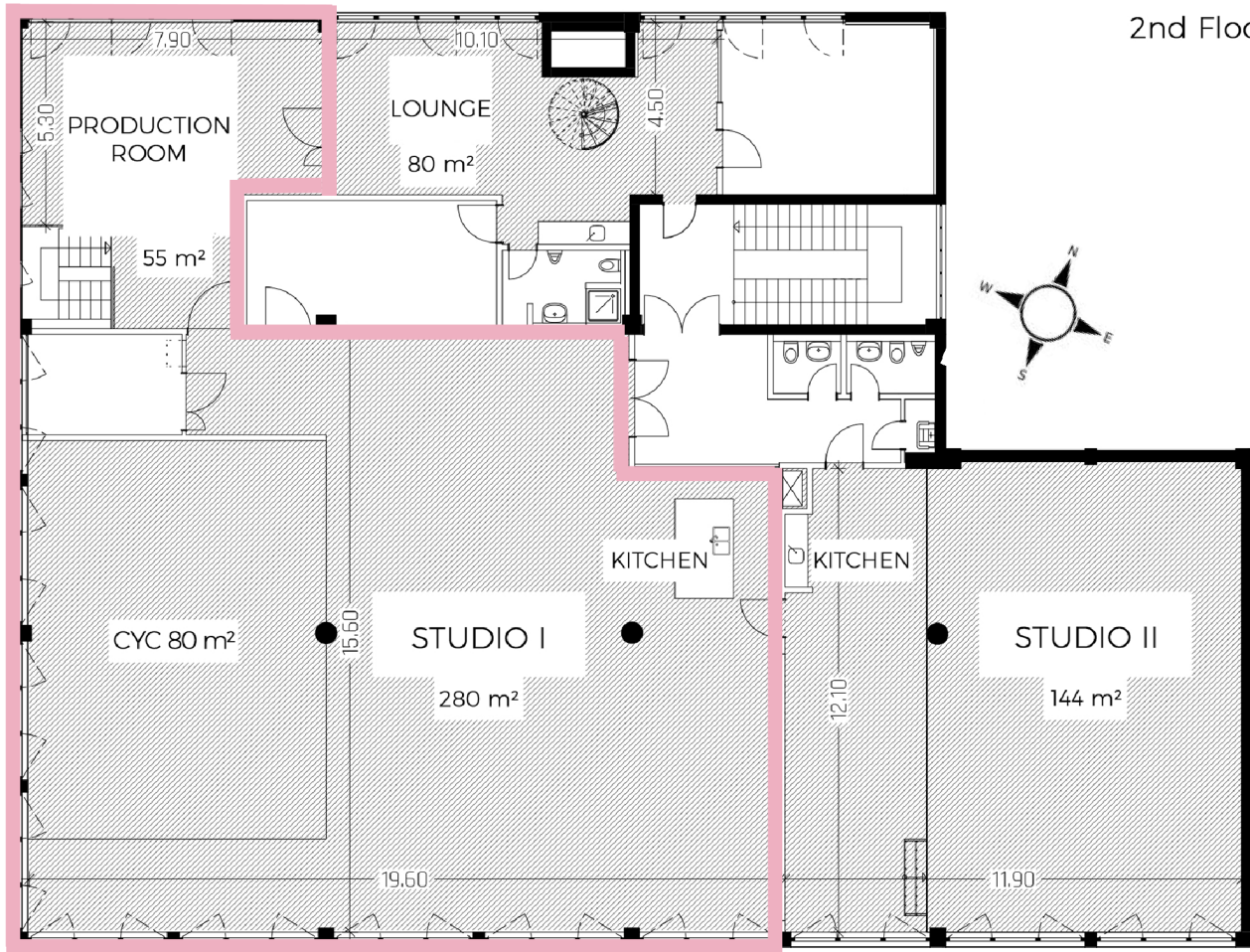
HOT BEVERAGES

- Complimentary coffee and tea for up to 10 people

COLD BEVERAGES

- A selection of 18 soft drinks, 5 types of beer, 2 wine varieties
- Charged by consumption

2nd Floor



ON-SITE PARKING

2 CAR PARKING SPOTS are available in front of the studio entrance for crew and equipment loading/unloading.
ADDITIONAL PARKING can be arranged upon request.
FREE PUBLIC STREET PARKING and at Hornbach lot is also available (see map)

